



## 2014 Summer Camp & Programs at Montessori International

### Summer Toddler Program

Tu/Wed/Th from June 17—July 24

18 months—3 years

8:30—11:30

### Camps for ages 3-5

	Camp	Age	Hours
June 16-20	UK Elite Soccer Camp	3—5	9:00—10:30
June 23-27	Brick House's Lego Little Builders Camp with Spanish	3—5	8:30—11:30
June 23-27	Stay and Play	3—5	11:30—3:30
July 14-18	Space Camp	3—5	8:30—11:30
July 14-18	Stay and Play	3—5	11:30—3:30

### Camps for ages 6-12

	Camp	Age	Hours
June 9-13	UK Elite Soccer Camp	6—12	9:00—3:00
June 16-20	John Fishback's Nature Camp	6—12	9:00—3:00
June 23-27	Silver Knights Chess Camp	6—12	8:30—11:30
June 23-27	Lunch Buddies, for students in AM & PM Camp (No Charge—sign up on attached form)	6—12	11:30—12:30
June 23-27	Brick House's LEGO Simple Machines Camp	6—12	12:30—3:30
July 14-18	Around the World in Five Days	6—12	8:30—11:30
July 14-18	Lunch Buddies, for students in AM & PM Camp (No Charge—sign up on attached form)	6—12	11:30—12:30
July 14-18	Hands-On Learning Services' Science, Technology, Engineering & Math Camp	6—12	12:30—3:30

- ◆ All camps take place at MICH. See following pages for camp descriptions and registration instructions.
- ◆ MICH families have exclusive enrollment privileges until March 7. After that date, non-MICH students will be welcome to enroll in the camps, with the exception of the Stay and Play program. Don't delay—enrollment is limited.
- ◆ Parents will escort campers to and from the camp room each day.

## Programs for children aged 3-5



### UK Elite Soccer Camp

June 16-20 from 9:00 am—10:30 am, for children aged 3-5, \$120

Soccer incorporates constant movement, aerobic exercise, balance and eye-foot coordination as well as healthy social interaction. It is also an ideal activity to promote all around physical development in early childhood. U.K. Petite Summer Soccer Camps help to increase early physical and emotional development with 3-5 year old children. The fun, healthy and exciting world of soccer can now be part of their active lifestyle.

Each day is structured to promote individualized learning through the medium of fun soccer-related games and activities. Our philosophy and methodology is based on cutting edge educational principles of how children learn techniques and develop them into skills while having a FANTASTIC TIME! Parents are welcome to stay and join in the fun!

The camp price includes a soccer ball and a UK Elite T-Shirt. Sign up at <http://tinyurl.com/MICH Soccer2014> (scroll to the bottom of the web page). Questions? Contact Ian or Steven at 410-465-8822.



### The Brick House presents

### LEGO® Little Builders infused with Spanish

June 23—27 from 8:30—11:30 am, for ages 3-5, \$185

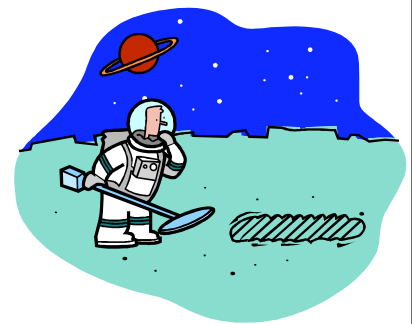
Little Builders Camp will give your child a head start in creative building and engineering. Little builders, along with their instructors, will create their first simple constructions. Each class will play games, sing songs, and create small projects out of blocks and materials. Spanish words and phrases will be introduced. Classes are designed to facilitate holistic learning and to cement scientific and creative arts concepts that young ones may already be learning in school. Our main goal is to enhance hand-eye coordination, develop fine motor skills, promote creative thinking, and encourage sharing.

Register by going to <http://tinyurl.com/MICHLittleBuilders> Questions? Contact the Brick House at (410) 571-3089.

### Hands-On Learning Services' Space Camp

July 14—18 from 8:30—11:30 am, for ages 3-5, \$200

Children will learn about the planet Earth and how it relates to the moon, the sun, and the other planets in our solar system. We'll learn about stars, constellations, comets, and space exploration through all sorts of hands-on activities and projects including a few types of rockets, NASA-designed "space toys," and the use of our "space tent."



To register, visit <http://tinyurl.com/MICHScience2014>

Questions? Contact Shaun at [shaun@hands-onlearningservices.com](mailto:shaun@hands-onlearningservices.com)

### Stay and Play, from 11:30—3:30, for ages 3-5, \$125

June 23—July 27

July 14—18

Children will eat their sack lunches and play outside, followed by either a nap or play time. To register, complete the attached form and return to MICH office with your payment. Questions? Contact MICH at 410-757-7789.

## Programs for children 6 and older

### UK Elite Soccer Camp— the perfect combination of learning and FUN!

June 9-13 from 9:00 am—3:00 pm, for children aged 6-9 (10-12 by special request) \$199

This action-packed camp promotes learning of techniques and skills focusing on the individual player. Each day follows a national theme, introducing young players to the international flavor of soccer.



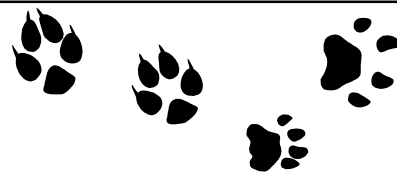
A typical day will include whole-group games, structured practices, scrimmages, and our World Cup Tournament to end each day. Our professional coaches will ensure players have a memorable experience & improve their skills. Camp price includes a UK Elite T-Shirt.

Sign up at <http://tinyurl.com/MICHsoccer2014> (scroll to the bottom of the web page)

Questions? Contact Ian or Steven at 410-465-8822.

### John Fishback's Nature Adventure Day Camp

June 16-20 from 9:00 am—3:00 pm, for children aged 6-12, \$320



Nature Adventure Day Camp explores the natural world through American Indian and Naturalist perspectives. Campers will enjoy learning through a multidimensional approach which utilizes Indian crafts, survival skills, awareness exercises, wild plants, outdoor games and nature observation. Children return home each day with many treasures and great memories. This is a very popular camp so don't wait to sign up. There is a limit of 15 campers!

The Camp is directed by John Fishback, an environmental educator and Anne Arundel County firefighter.

Register by going to [www.fishbacknature.com](http://www.fishbacknature.com) and clicking on summer programs. Print out the online form listed under Nature Adventure Day camp and mail in with full payment. Remember, this camp is not advertised to the general public until March 7 so you will not see the June 16-20 dates. Be sure to fill out the activity section with "June 16-20 Montessori camp." Questions? Contact John Fishback at [fishbacknature@verizon.net](mailto:fishbacknature@verizon.net)

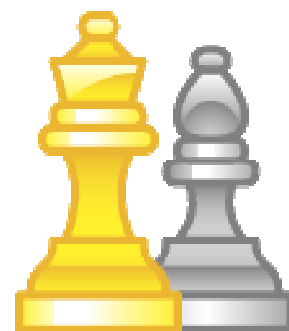
### Silver Knights Chess Club June 23-27 from 8:30—11:30am, for ages 6-12, \$199

Spend a week playing and learning about chess. Learn from highly rated professional chess instructors at Silver Knights Chess. Campers are divided into groups by skill level, from beginner through highly rated tournament players. Activities include learning openings, tactics and endgames; studying master games; playing games against fellow students, analyzing students games and solving chess puzzles along with some fresh air breaks.

Every camper receives a t-shirt and a tournament-style chess set. Bring a nut-free snack.

Register by going to <http://tinyurl.com/MICHchess2014>

Questions? Contact Joe Summers at 703-574-2070 or [joe@silverknightschess.com](mailto:joe@silverknightschess.com)



## Programs for children aged 6-12, continued



The Brick House presents

**LEGO® Simple Machines**

June 23—27 from 12:30—3:30 pm, for ages 6-12, \$185

The Brick House engineers will lead students through exciting and challenging LEGO builds designed to help them master simple engineering concepts with pulleys, levers, gears, rotors and doors, to name a few. Students will love constructing fun designs like go-karts, catapults, cranes, cars, and more. The concepts will be reinforced with project-based learning and everyone involved is sure to get the help they need to succeed with The Brick House's creative engineering approach to S.T.E.M. learning.

At The Brick House we stay away from “robotics by the numbers;” we don't approach robotics from a strictly engineering point of view. Instead, we focus on a positive leadership environment that promotes a dynamic learning experience in order to focus on the creative strengths of the group. Students will devise original and alternative solutions to engineering problems because they are applying their own individual creative ideas, rather than using pre-determined solutions.

Register by going to <http://tinyurl.com/MICHSimpleMachines> Questions? Contact the Brick House at (410) 571-3089.



### **Around the World in Five Days**

July 14—18 from 8:30—11:30, for ages 6-12, \$140

MICH's own Anthea Cooper welcomes your child on a five-day adventure. Students will learn about a new country each day and explore its customs, art, cuisine, music, and stories.

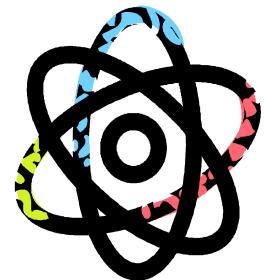
To register, **complete the attached form** and return to the MICH office with your payment. Questions? Contact Anthea Cooper at 410-757-7789.

### **Hands-On Learning Services'**

#### **Science, Technology, Engineering & Math Camp**

July 14—18 from 12:30—3:30, for ages 6-12, \$199

Focusing on the intersections of physics, chemistry, and math, students will embark on a week of science exploration where they'll learn about engineering towers, bridges, boats, and flying objects. We'll experiment with forces like gravity, friction, attraction, and repulsion as we design, build, and test many different scientific concepts.



To register, visit <http://tinyurl.com/MICHScience2014>  
Questions? Contact Shaun at [shaun@hands-onlearningservices.com](mailto:shaun@hands-onlearningservices.com)





**MONTESSORI  
INTERNATIONAL  
CHILDREN'S  
HOUSE**

## **TODDLER SUMMER PROGRAM**

The Toddler Community Summer Program at MICH is a great introduction to the Montessori classroom. The Toddler Program offers your child social interaction with other children, development of language skills, care of oneself and the environment, music and movement activities and exploration of art materials.

The children begin each morning on the playground where they ride trikes, push carts, climb up the climber and slide down the slide, kick balls, play in the sandbox and tend to the garden. Once inside the classroom the children explore the Montessori materials and may choose to read a book, feed the fish, paint a picture, work on a puzzle and the list goes on. Each day the children will take part in preparing the snack and setting the table. Everyone sits together and eats family style. After cleaning up the snack dishes it is time for music. Out come the bells, rhythm sticks, drums, or shakers and the singing begins.

We invite your child to be part of this joyful, nurturing community! Please call the office at 410-757-7789 for more information.

**MONTESSORI INTERNATIONAL CHILDREN'S HOUSE**  
**1641 N WINCHESTER ROAD**  
**ANNAPOLIS, MARYLAND 21409**  
**410-757-7789**

**2014 SUMMER TODDLER PROGRAM REGISTRATION**

NAME OF CHILD \_\_\_\_\_ DOB \_\_\_\_\_

ADDRESS \_\_\_\_\_ HOME PHONE \_\_\_\_\_

	<u>NAME</u>	<u>EMAIL ADDRESS</u>	<u>CELL PHONE</u>
MOTHER	_____	_____	_____
FATHER	_____	_____	_____

Our Toddler Program is licensed by the Office of Child Care – Maryland State Department of Education.

Parents are asked to provide a pre-assigned snack on 1 or 2 days during the program.

In consideration of the provisions of a Montessori education program by Parents for Montessori Education, Inc. ("the School"), we the undersigned agree to pay the charges as specified below:

DATE: Tuesday, Wednesday & Thursday  
June 17 – July 24, 2014

TIME: 8:30 – 11:30 AM

AGE: 18 to 30 months (class is limited to 12 students)

TUITION: \$875.00

PAYMENT: A non-refundable \$250.00 deposit and a signed copy of this contract will reserve your child's space in the program. To be enrolled in this program, all students must have submitted an Application to the school and paid the \$50.00 Application Fee.

May 1, 2014 - The balance of tuition (\$625.00) is due.

Parents are jointly and severally responsible for the payment of all tuition. All children are considered enrolled for the entire six week program. No refunds will be given on tuition paid for the summer program.

Current MICH families may register students at any time, as space allows. **Registration opens to families new to MICH on Friday, January 24. Forms from new families may be postmarked OR delivered in person beginning January 24, but not before. The class is limited to twelve students, who will be admitted on a first-come, first served basis.**

\_\_\_\_\_  
Father's signature

\_\_\_\_\_  
Date

\_\_\_\_\_  
Mother's signature

\_\_\_\_\_  
Date

MICH admits students of any race, color, national and ethnic origin to all the rights, privileges, programs, and activities generally accorded or made available to students at the school. MICH does not discriminate on the basis of race, color, national and ethnic origin in administration of its educational policies, admissions policies, and other school-administered programs. **CANCELLATION** – The school may cancel a summer session that lacks sufficient enrollment. When a session is cancelled, families of registered students will be notified promptly and the deposit and tuition paid will be refunded.